

BOX SCORE: *** FINAL ***

Date: 03-24-88 Site: State Tourney, Frankfort Attendance: 3,325

Team: Warren Central

NO.	NAME	TOTAL FG		3-POINT		FT	FTA	REB				PF	TP	A	TO	BLK	S	MIN
		FG	FGA	FG	FGA			O	D	T	L							
51	Cotton, L.	6	14	0	0	0	4	3	7	10	1	12	1	1	0	1	32	
30	Ferstl, Shawna	2	7	0	0	2	2	2	0	2	5	6	1	4	0	3	30	
53	Lively, Sherita	2	3	0	0	2	2	1	2	3	3	6	0	1	1	1	27	
21	Forshee, S.	4	6	2	4	3	4	0	0	0	2	13	2	2	0	4	32	
31	Spurlock, S.	2	7	1	5	2	2	0	2	2	4	7	2	3	0	1	32	
52	Payne, Jenni	1	4	0	0	0	0	0	0	0	0	2	0	0	0	0	7	
TEAM								1	1									
TOTALS		17	41	3	9	9	14	6	12	18	15	46	6	11	1	10	160	

Percentages:	Game	FG	FT	3-PT.	Deadball	Rebounds	FT
Period 1	1	6/8	75.0%	2/2	100.0%	1/3	33.3%
Period 2	2	3/10	30.0%	1/2	50.0%	6/8	75.0%
Period 3	3	4/12	33.3%	0/2	0.0%	0/0	0.0%
Period 4	4	4/11	36.4%	0/3	0.0%	2/3	66.7%

Team: Oldham County

NO.	NAME	TOTAL FG		3-POINT		FT	FTA	REB				PF	TP	A	TO	BLK	S	MIN
		FG	FGA	FG	FGA			O	D	T	L							
41	Harned, Terri	5	11	0	0	2	2	0	6	6	1	12	2	3	0	1	32	
44	Godman, Liz	10	16	0	0	6	10	7	2	9	3	26	2	0	1	0	32	
45	Edwards, Heather	1	2	0	0	0	0	1	4	5	1	2	1	5	0	0	23	
31	Francis, Tina	0	2	0	0	0	1	0	2	2	2	0	2	2	0	1	22	
11	Prather, Charla	1	3	0	0	2	2	1	3	4	4	4	3	7	0	1	32	
03	Lewis, Diane	0	2	0	0	0	2	0	1	1	1	0	0	1	0	0	13	
33	O'Bryan, Jenny	2	2	0	0	0	0	1	0	1	1	4	2	0	0	0	6	
TEAM								1	2	3								
TOTALS		19	38	0	0	10	17	11	20	31	13	48	12	18	1	3	160	

Percentages:	Game	FG	FT	3-PT.	Deadball	Rebounds	FT
Period 1	1	6/8	75.0%	0/0	0.0%	1/2	50.0%
Period 2	2	2/9	22.2%	0/0	0.0%	2/4	50.0%
Period 3	3	4/8	50.0%	0/0	0.0%	0/0	0.0%
Period 4	4	7/13	53.8%	0/0	0.0%	7/11	63.6%

OFFICIALS: Samuel Higdon, Phillip Tucker, Alt. - Jan Baker

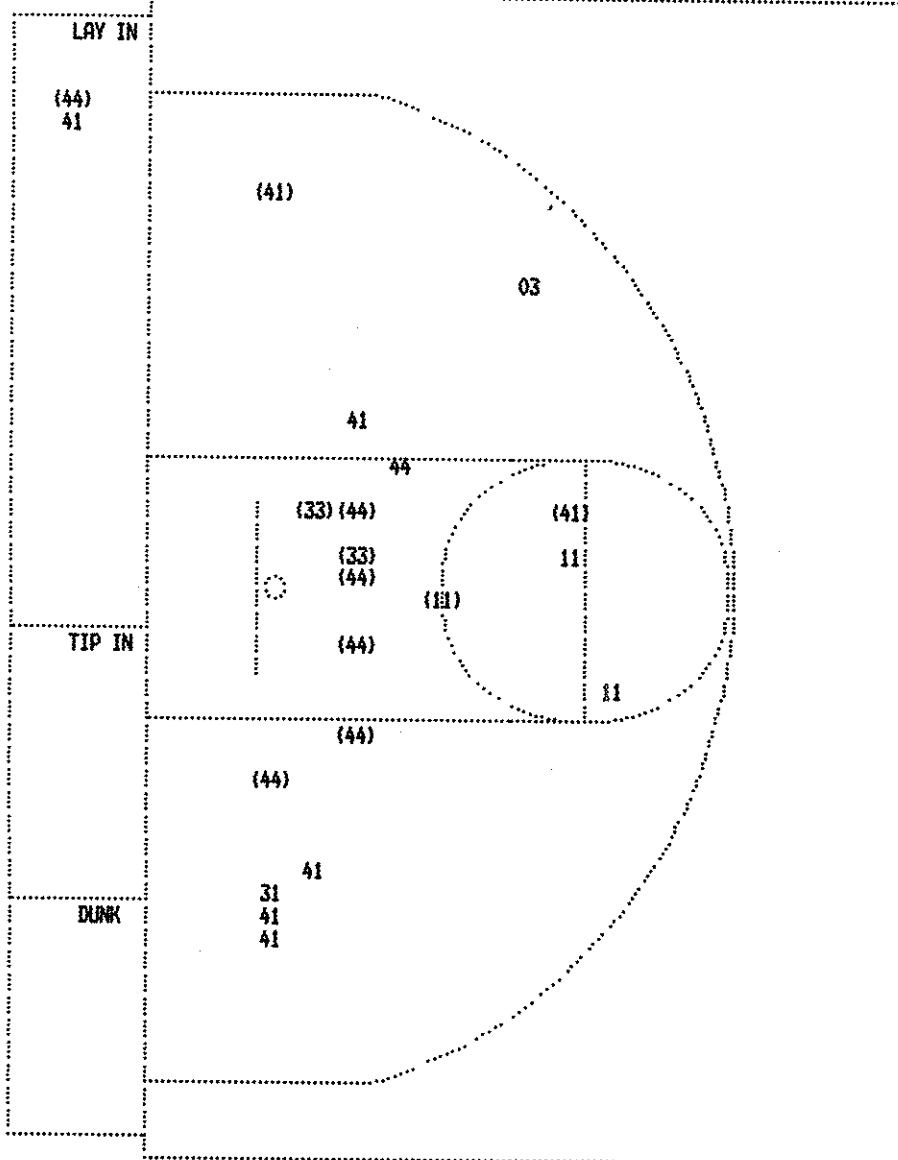
SCORE BY PERIODS

Technical: None

Warren Central	15	13	8	10	=	46
Oldham County	13	6	8	21	=	48

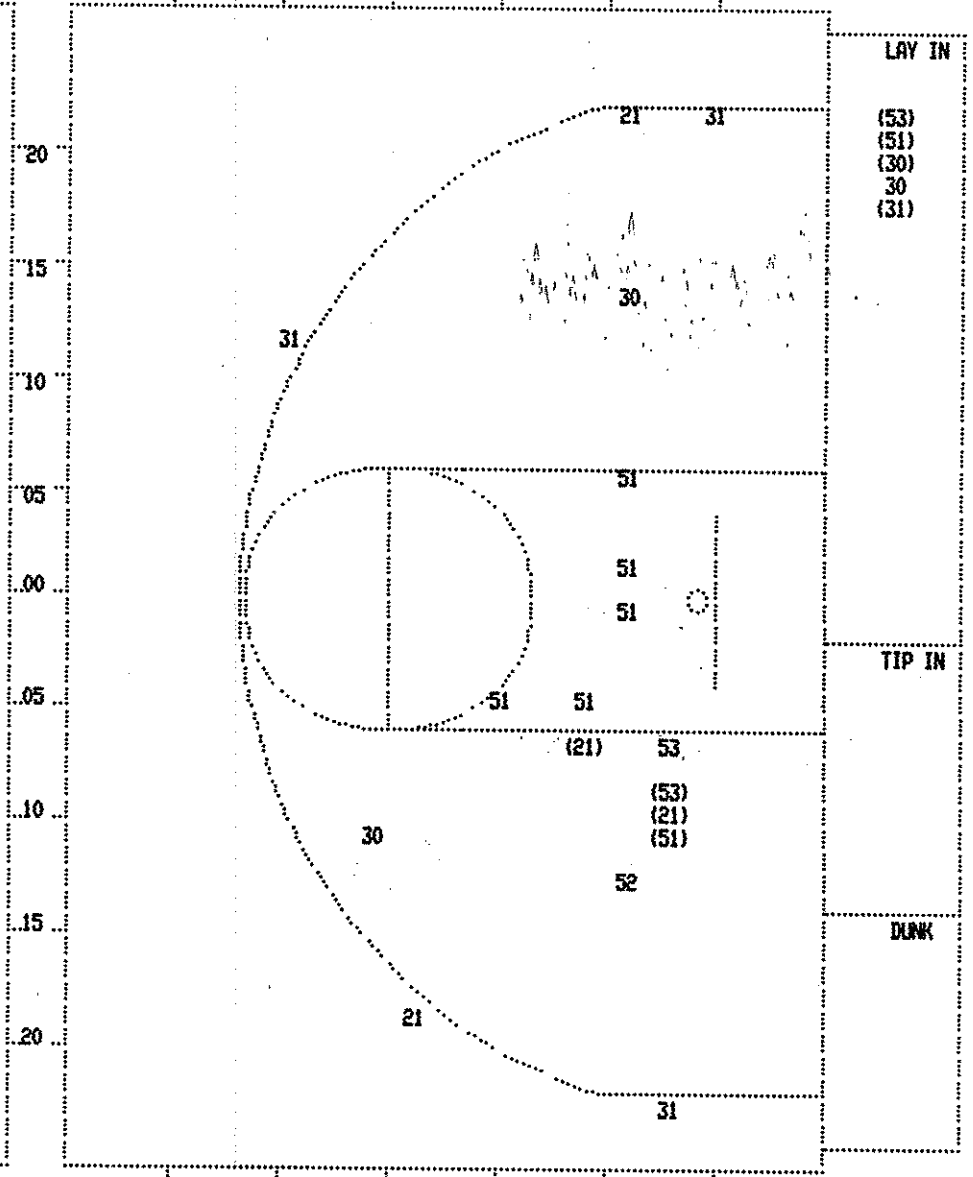
Produced by the K.H.S.A.A. Stat Crew with FINAL III™

SECOND HALF SHOT CHART Produced by the K.H.S.A.A. Stat Crew with FINAL III™



Oldham County

Player	Player	Player
41 - Harned, Te 2 / 7 28.5%	33 - O'Bryan, J 2 / 2 100.0%	
44 - Godman, Li 6 / 7 85.7%		
31 - Francis, T 0 / 1 0.0%		
11 - Prather, C 1 / 3 33.3%		
03 - Lewis, Dia 0 / 1 0.0%		
Layups 1-9 Ft	10-15 Ft	Over 15 Ft 3 Pointers Total
1 / 2 50.0%	8 / 10 80.0%	1 / 7 14.3%
		1 / 2 50.0%
		11 / 21 52.4%



Warren Central

Player	Player	Player
51 - Cotton, L 2 / 7 28.5%	52 - Payne, Jen 0 / 1 0.0%	
30 - Ferstl, Sh 1 / 4 25.0%		
53 - Lively, Sh 2 / 3 66.6%		
21 - Forshee, S 2 / 4 50.0%		
31 - Spurlock, 1 / 4 25.0%		
Layups 1-9 Ft	10-15 Ft	Over 15 Ft 3 Pointers Total
4 / 5 80.0%	3 / 9 33.3%	1 / 3 33.3%
		0 / 1 0.0%
		0 / 5 0.0%
		8 / 23 34.8%

Player	Team	Oldham County	Time	Score	Warren Central	Player	Team
			4 1:47		3 ft Lane Bank by Cotton, L., missed	6-13	46.1% 17-37 45.9%
			4 1:45		Foul on Ferstl, Shawna	5	6
			4 1:45		Sub In: Payne, Jenni Out: Ferstl, Shawna		
		REB: 27 A: 11 BLK: 1 TD: 16 PF: 4 S: 3 FT: 5-12 41.6% FG: 18-36 50.0%	4 1:43		Warren Central No. 3	REB: 18 A: 6 BLK: 1 TD: 11 PF: 6 S: 8 FT: 7-11 63.6% FG: 17-37 45.9%	
2-2	100%	7-14 50.0%	4 1:43	*43-44			
1	5	Harned, Terri, 1 & Bonus made both Foul on Harned, Terri	4 1:35				
			4 1:35		Cotton, L., 1 & Bonus missed 1st	0-4	00.0% 7-12 58.3%
D-2	Tot-2	D-3 Tot-28	4 1:35				
5-11	45.4%	18-37 48.6%	4 1:16				
		Rebound by Francis, Tina 12 ft Left Base Line Jump shot by Harned, Terri, missed Foul on Francis, Tina	4 1:15				
2	6		4 1:15	43-46*	Spurlock, S., 1 & Bonus made both	2-2	100% 9-14 64.2%
10-16	62.5%	19-38 50.0%	4 0:47	*45-46			
2	12	6 ft Left Side Jump shot by Godman, Liz, made Assist by O'Bryan, Jenny	4 0:47		Foul on Forshee, S.	2	7
6-10	60.0%	8-15 53.3%	4 0:47	*46-46			
		Godman, Liz, 1 Free Throw made	4 0:29		3 pt 22 ft Right Base Line Jump shot by Spurlock, S., missed	2-7	28.5% 17-38 44.7%
D-1	Tot-5	D-4 Tot-29	4 0:24				
6	17	Rebound by Godman, Liz Dribbling Error on Prather, Charla	4 0:20		Steal by Cotton, L.	1	9
			4 0:18				
			4 0:16		2 ft Lane Jump shot by Cotton, L., missed	6-14	42.8% 17-39 43.5%
			4 0:14		Foul on Cotton, L.	1	8
		REB: 29 A: 12 BLK: 1 TD: 17 PF: 6 S: 3 FT: 8-15 53.3% FG: 19-38 50.0%	4 0:14		Warren Central No. 4	REB: 18 A: 6 BLK: 1 TD: 11 PF: 8 S: 9 FT: 9-14 64.2% FG: 17-39 43.5%	
2-2	100%	10-17 58.8%	4 0:14	*48-46			
		Sub In: Lewis, Diane Out: O'Bryan, Jenny Prather, Charla, 1 & Bonus made both	4 0:14				
D-1	Tot-1	D-5 Tot-30	4 0:08		12 ft Right Side Jump shot by Payne, Jenni, missed	1-4	25.0% 17-40 42.5%
		Rebound by Prather, Charla	4 0:08				
7	18	Dribbling Error on Prather, Charla	4 0:04		Steal by Forshee, S.	1	10
			4 0:04				
			4 0:01		3 pt 22 ft Right Side Jump shot by Forshee, S., missed	4-6	66.6% 17-41 41.4%
D-3	Tot-3	D-6 Tot-31	4 0:00				
		Rebound by TEAM					

Warren Central "Lady Dragons" vs Oldham County "Lady Colonels"
1st Half Play by Play

Tip off at 1:00 p.m. on 03/24/88 at State Tourney, Frankfort
Produced by the K.H.S.A.A. Stat Crew with FINAL III™

PAGE : 2

Player	Team	Oldham County	Time	Score	Warren Central	Player	Team
Harned, Terri	Godman, Liz	Edwards, Heather, Francis, Tina, Prather, Charla			Cotton, L., Ferstl, Shawna, Lively, Sherita, Forshee, S., Spurlock, S.		
1	3	Ball to Lady Colonels Foul on Edwards, Heather	2 7:27				
			2 7:26	13-16*	Lively, Sherita, 1 Free Throw made	1-1	100% 2-4 50.0%
			2 7:25	13-17*	Lively, Sherita, 1 Free Throw made	2-2	100% 3-5 60.0%
			2 6:56		Player Control Foul on Lively, Sherita	2	4
			2 6:12	13-20*	3 pt 22 ft Straight Away Jump shot by Spurlock, S. Assist by Forshee, S.	1-1	100% 7-9 77.7%
			2 5:43		Foul on Lively, Sherita	1	4
			2 5:43		Sub In: Payne, Jenni Out: Lively, Sherita	3	5
			2 5:43				
3-4	75.0%	3-4 75.0%					
4-8	50.0%	7-13 53.8%					
2	7	Sub In: Lewis, Diane Out: Francis, Tina Godman, Liz, 2 Free Throws made both	2 5:43	*15-20			
1	4	15 ft Lane Jump shot by Godman, Liz Assist by Prather, Charla Foul on Lewis, Diane	2 4:52	*17-20			
			2 3:54				
			2 3:42	17-22*	6 ft Left Base Line Bank by Payne, Jenni Assist by Forshee, S.	1-2	50.0% 8-12 66.6%
			2 3:12	*19-22		2	5
1-1	100%	8-14 57.1%					
1	8	2 ft Lane Bank by Edwards, Heather Assist by Godman, Liz	2 2:23				
2	5	Foul on Godman, Liz Sub In: Francis, Tina Out: Edwards, Heather	2 2:23		Cotton, L., 2 Free Throws missed both	0-3	00.0% 3-7 42.8%
			2 1:54				
1	6	Foul on Francis, Tina	2 1:54	19-24*	Ferstl, Shawna, 2 Free Throws made both	2-2	100% 5-9 55.5%
			2 1:37		Foul on Ferstl, Shawna	1	6
3-5	60.0%	3-5 60.0%					
2	7	Godman, Liz, 1 & Bonus missed 1st Foul on Prather, Charla	2 1:25				
			2 1:25	19-26*	Forshee, S., 1 & Bonus made both	3-4	75.0% 7-11 63.6%
			2 0:50	19-28*	Driving Layup by Ferstl, Shawna Assist by Cotton, L.	1-3	33.3% 9-17 52.9%
			2 0:19		Foul on Ferstl, Shawna	1	6
0-1	00.0%	3-6 50.0%				2	7
			2 0:19				

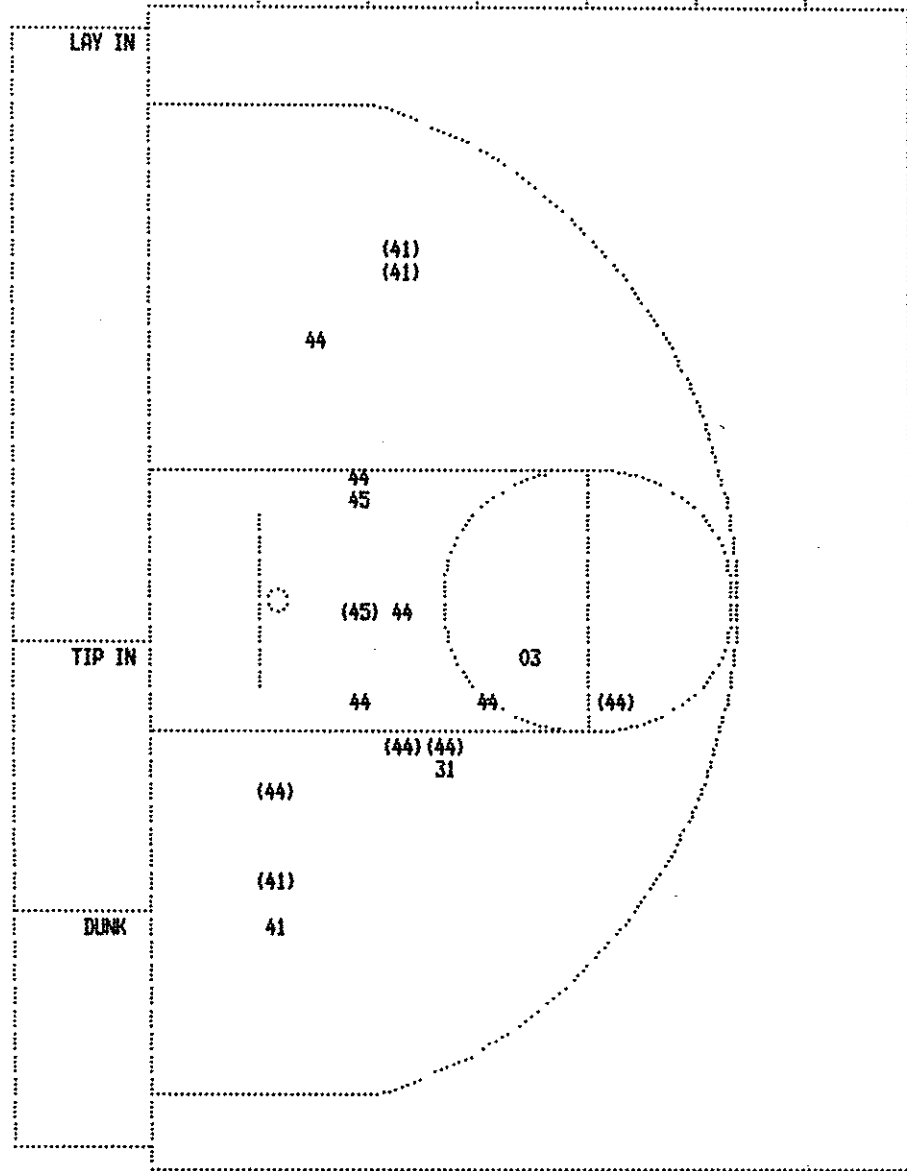
Warren Central "Lady IDragons" vs Oldham County "Lady Colonels"
1st Half Play by Play

Tip off at 1:00 p.m. on 03/24/88 at State Tourney, Frankfort
Produced by the K.H.S.A.A. Stat Crew with FINAL III™

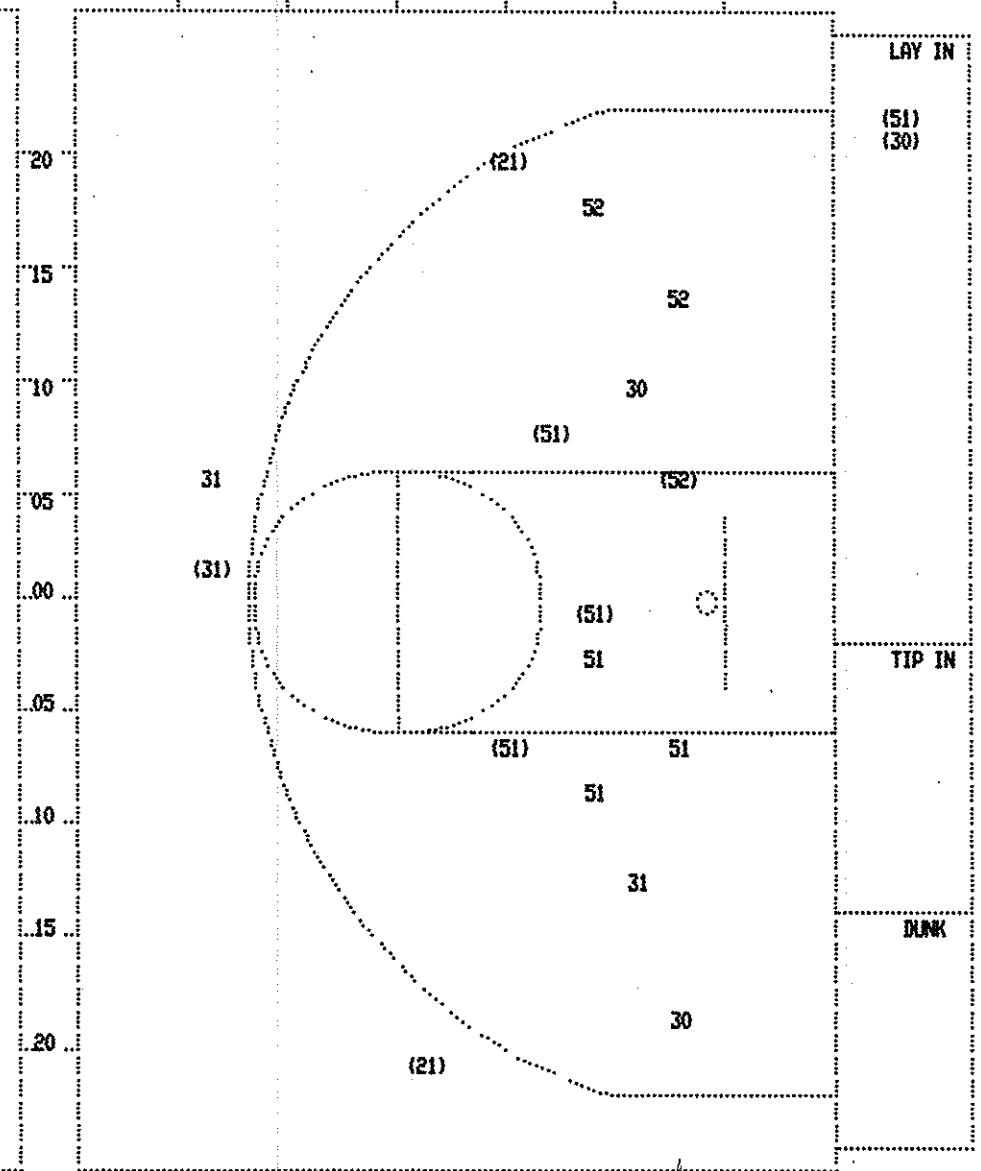
PAGE : 1

Player	Team	Oldham County	Time	Score	Warren Central	Player	Team
Harned, Terri, Godman, Liz, Edwards, Heather, Francis, Tina, Prather, Charla					Cotton, L., Ferstl, Shawna, Lively, Sherita, Forshee, S., Spurlock, S. Ball to Lady IDragons		
1-1	100%	1-2 50.0%	8 ft Left Angle Jump shot by Godman, Liz	1 7:04	*2-0		
1		1	Assist by Harned, Terri				
				1 6:43	2-3*	3 pt 23 ft Right Side Bank by Forshee, S.	1-1 100% 1-2 50.0%
				1 6:05	2-5*	10 ft Left Side Jump shot by Cotton, L.	1-1 100% 2-3 66.6%
				1 5:38	2-8*	3 pt 22 ft Left Side Jump shot by Forshee, S.	2-2 100% 3-4 75.0%
						Assist by Spurlock, S.	1 1
				1 5:03	2-10*	Layup Off Fast Break by Cotton, L.	2-2 100% 4-5 80.0%
						Assist by Spurlock, S.	2 2
1		1	Foul on Godman, Liz	1 5:03			
				1 5:03			
			REB: 1 A: 1 BLK: 0 TD: 3 PF: 1			REB: 1 A: 2 BLK: 0 TD: 1 PF: 0	
			S: 0 FT: 0-0 00.0% FG: 1-2 50.0%	No. 1 Oldham County	T I M E - O U T	S: 1 FT: 0-0 00.0% FG: 4-5 80.0%	
				1 5:03		Cotton, L., 1 Free Throw missed	0-1 00.0% 0-1 00.0%
				1 4:45		Foul on Spurlock, S.	1 1
1-2	50.0%	2-3 66.6%	16 ft Right Side Jump shot by Harned, Terri	1 4:34	*4-10		
1		2	Assist by Francis, Tina				
				1 4:21	4-12*	4 ft Lane Bank by Cotton, L.	3-3 100% 5-6 83.3%
				1 3:47		Foul on Lively, Sherita	1 2
1-2	50.0%	1-2 50.0%	Godman, Liz, 2 Free Throws missed 1st made 2nd	1 3:47	*5-12		
2-3	66.6%	3-4 75.0%	16 ft Right Side Jump shot by Harned, Terri	1 3:20	*7-12		
1		3	Assist by Prather, Charla				
				1 2:49		Foul on Spurlock, S.	2 3
2-2	100%	4-5 80.0%	7 ft Left Side Bank by Godman, Liz	1 1:59	*9-12		
2		4	Assist by Harned, Terri				
1		2	Foul on Prather, Charla	1 1:42			
				1 1:42	9-13*	Forshee, S., 2 Free Throws made 1st missed 2nd	1-2 50.0% 1-3 33.3%
3-4	75.0%	5-7 71.4%	8 ft Left Base Line Jump shot by Godman, Liz	1 0:55	*11-13		
1		5	Assist by Edwards, Heather				
				1 0:39	11-15*	10 ft Lane Jump shot by Cotton, L.	4-5 80.0% 6-8 75.0%
						Assist by Ferstl, Shawna	1 3
3-4	75.0%	6-8 75.0%	12 ft Left Base Line Jump shot by Harned, Terri	1 0:04	*13-15		
2		6	Assist by Francis, Tina				

FIRST HALF SHOT CHART Produced by the K.H.S.A.A. Stat Crew with FINAL III™



Player	Player	Player	Player	Player	Player
41 - Harned, Te	3 / 4	75.0%			
44 - Godman, Li	4 / 9	44.4%			
45 - Edwards, He	1 / 2	50.0%			
31 - Francis, T	0 / 1	0.0%			
03 - Lewis, Dia	0 / 1	0.0%			
Layups	1-9 Ft	10-15 Ft	Over 15 Ft	3 Pointers	Total
	4 / 10	2 / 5	2 / 2		8 / 17
	40.0%	40.0%	100.0%		47.1%



Player	Player	Player	Player	Player	Player
51 - Cotton, L	4 / 7	57.1%			
30 - Ferstl, Sh	1 / 3	33.3%			
21 - Forshee, S	2 / 2	100.0%			
31 - Spurlock, J	1 / 3	33.3%			
52 - Payne, Jen	1 / 3	33.3%			
Layups	1-9 Ft	10-15 Ft	Over 15 Ft	3 Pointers	Total
	2 / 2	2 / 5	2 / 5	0 / 2	3 / 4
	100.0%	40.0%	40.0%	0.0%	75.0%
					50.0%

BOX SCORE: * OFFICIAL FIRST HALF * Date: 03-24-88 Site: State Tourney, Frankfort Attendance:
 Team: Warren Central

NO.	NAME	TOTAL FG		3-POINT		FT	FTA	REB			PF	TP	A	TO	BLK	S	MIN
		FG	FGA	FG	FGA			O	D	T							
51	Cotton, L.	4	7	0	0	0	3	2	4	6	0	8	1	1	0	0	16
30	Ferstl, Shawna	1	3	0	0	2	2	2	0	2	2	4	1	2	0	2	16
53	Lively, Sherita	0	0	0	0	2	2	0	1	1	3	2	0	1	1	0	10
21	Forshee, S.	2	2	2	2	3	4	0	0	0	0	9	2	1	0	1	16
31	Spurlock, S.	1	3	1	2	0	0	0	0	0	2	3	2	1	0	0	16
52	Payne, Jenni	1	3	0	0	0	0	0	0	0	0	2	0	0	0	0	6
TEAM								1	1								
TOTALS		9	18	3	4	7	11	4	6	10	7	28	6	6	1	3	80
Percentages:		HALF-----		FG		9/ 18	50.0%	3-PT.		3/ 4	75.0%	Deadball Rebounds		7/ 11	FT		63.6%
		Period 1				6/ 8	75.0%			2/ 2	100.0%			1/ 3			33.3%
		Period 2				3/ 10	30.0%			1/ 2	50.0%			6/ 8			75.0%

Team: Oldham County

NO.	NAME	TOTAL FG		3-POINT		FT	FTA	REB			PF	TP	A	TO	BLK	S	MIN
		FG	FGA	FG	FGA			O	D	T							
41	Harned, Terri	3	4	0	0	0	0	0	3	3	0	6	2	3	0	1	16
44	Godman, Liz	4	9	0	0	3	5	3	1	4	2	11	1	0	1	0	16
45	Edwards, Heather	1	2	0	0	0	0	1	2	3	1	2	1	3	0	0	14
31	Francis, Tina	0	1	0	0	0	1	0	0	0	1	0	2	0	0	0	12
11	Prather, Charla	0	0	0	0	0	0	0	2	2	2	0	2	3	0	0	16
03	Lewis, Diane	0	1	0	0	0	0	0	0	0	1	0	0	0	0	0	6
TEAM								1	1								
TOTALS		8	17	0	0	3	6	5	8	13	7	19	8	9	1	1	80
Percentages:		HALF-----		FG		8/ 17	47.1%	3-PT.		0/ 0	0.0%	Deadball Rebounds		3/ 6	FT		50.0%
		Period 1				6/ 8	75.0%			0/ 0	0.0%			1/ 2			50.0%
		Period 2				2/ 9	22.2%			0/ 0	0.0%			2/ 4			50.0%

OFFICIALS: Samuel Higdon, Phillip Tucker, Alt. - Jan Baker SCORE BY PERIODS
 Technicals: None Warren Central 15 13 = 28
 Oldham County 13 6 = 19

Produced by the K.H.S.A.A. Stat Crew with FINAL III™